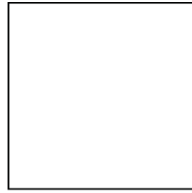
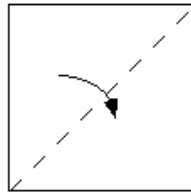


Six Sided Snowflake

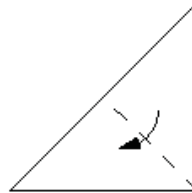
Copy real snowflake patterns from the snowflake photographs in "Real Snowflake Patterns" at www.donnaward.net > Resources > Students - For Fun > Real Snowflake Patterns



Start with square piece of paper



Fold in half



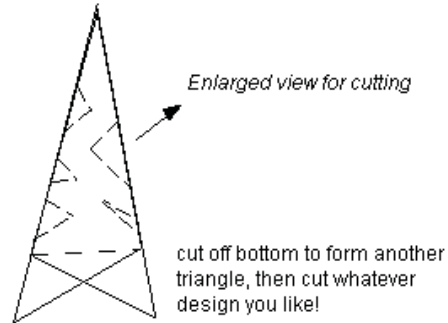
Fold in half again



Fold in thirds, one section to the front, one to the back.



You are now ready to cut.



Enlarged view for cutting

cut off bottom to form another triangle, then cut whatever design you like!

"Six-Sided Snowflake" by Susan Teel
(Archived web page at www.teelfamily.com)

A Self-sticking Snowflake

Materials:



- a snowflake pattern (See * Real Snowflake Patterns)
- dimensional fabric paint (the kind that squeezes out of a bottle)
- ziplock baggie
- glitter

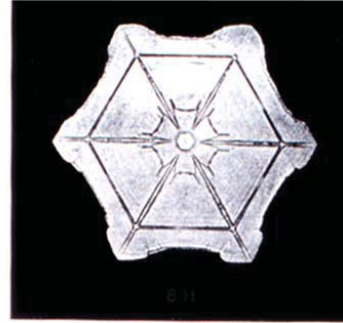
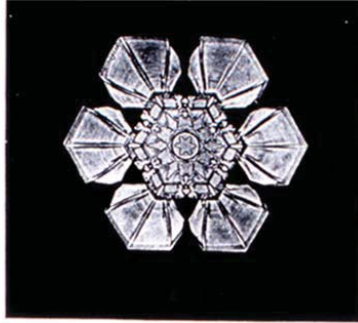
The great thing about these snowflakes is that they stick to any shiny surface like a refrigerator or glass window. Put the snowflake pattern in the plastic baggie and zip closed. On the outside of the baggie trace over the snowflake pattern with the fabric paint. Wear old clothes or a paint apron because it's easy to get some paint on your clothes. While the snowflake is still wet sprinkle glitter over the paint. Carefully shake off any excess glitter. Let dry. When completely dry peel off the baggie and put it up somewhere where every one can see it!

"A Self-Sticking Snowflake" by Susan Teel
(Archived web page at www.teelfamily.com)

8"x8" Real Snowflake Patterns can be accessed at www.donnaward.net, News & Reviews, Printable and Activities, Real Snowflake Patterns

www.donnaward.net > Resource > Students - For Fun > Snow Art

Real Snowflake Patterns



Snow flakes by Wilson Bentley "The Snowflake Man." Bentley was a bachelor farmer whose hobby was photographing snow flakes. Location; Jericho, Vermont, Winter 1902. Public Domain Retrieved from: <http://www.photolib.noaa.gov/>

More snowflake photographs can be accessed at <http://www.photolib.noaa.gov/> Search "Wilson Bentley".